

InGeniusSoftware.com



Desktop Power Portal

Installation Guide

Installation Guide – InGenius Desktop Power Portal
Release # 1.0
July 2009

TRADEMARKS

InGenius and the InGenius logo are trademarks of InGenius Software Inc. Windows, XP, Vista and Microsoft are trademarks of Microsoft Corporation. Mitel is a trademark of Mitel Networks Corporation. Other product names mentioned in this document may be trademarks of their respective companies and are hereby acknowledged.

Table of Contents

1	DESKTOP POWER PORTAL INSTALLATION.....	3
1.1	Prerequisites	3
1.2	Desktop Power Portal Application Overview.....	3
1.3	Initial Setup BEFORE You Install Desktop Power Portal	4
1.4	Desktop Power Portal Installation	5
1.5	Desktop Power Portal Configuration	9
1.6	Testing the Installation	17
2	APPENDIX – OPEN SOURCE SOFTWARE	17
3	APPENDIX – FOR YOUR INFORMATION	17
3.1	Desktop Power Portal and Microsoft Framework 2.0.....	17

1 Desktop Power Portal Installation

The InGenius Desktop Power Portal application provides an easy way to program keys on your Mitel 5300 series IP Phone.

The InGenius Desktop Power Portal application automatically pulls information from two different sources:

- **Microsoft Active Directory** for user information
- **Mitel 3300 ICP Switch** for phone programming

1.1 Prerequisites

Desktop Power Portal has a number required components needed to run:

- **Microsoft Windows Server 2003** or higher.
- **Microsoft Internet Information Services (IIS) 5.1** or higher.
- **Microsoft .NET framework 2.0**. Note: If not installed, the Desktop Power Portal installer will download and install it.
- **Microsoft Active Directory (AD)**. Desktop Power Portal uses the LDAP protocol to connect to AD to look up users.
- **Microsoft SQL Server** (Express Edition or higher).
- **Installed on a computer on a network that can access the Mitel 3300 ICP**. Desktop Power Portal needs to connect to the Mitel 3330 ICP to read and write phone key programming for users.
- You should ensure that the machine where you intend to install Desktop Power Portal is connected to the Internet during installation. This is necessary to verify your registration key. (There is a manual registration method using email if necessary.)

1.2 Desktop Power Portal Application Overview

Simply put, the Desktop Power Portal application makes it easy to program your phone keys from any web browser. Its intuitive interface has a very small learning curve for the end-user.

1.3 Initial Setup BEFORE You Install Desktop Power Portal

1. **Ensure access to Microsoft SQL Server 2005 or later.**

If you don't have an installation of **Microsoft SQL Server** to point to, install Microsoft SQL Server 2008 Express Edition available for free from Microsoft at <http://go.microsoft.com/?linkid=9394725>. The Desktop Power Portal application will not work without SQL Server. However, SQL Server and the Desktop Power Portal application may be hosted on two different machines. For the best performance, we recommend that the Desktop Power Portal web service would be installed on the same machine with SQL Server.

2. **Ensure that user information in Active Directory is up to date.**

Extensions are read from a field in the user's entry in Active Directory. The phone extension field in Active Directory must contain the given user's extension in order to be found so that they can program their phone. Entering the user's switch name in the switch field is optional; however, their phone will be located more quickly if you enter the user's switch name in the switch field. The switch name can be specified by IP address, by host name, or by FQDN, so long as they can be resolved from the Desktop Power Portal server.

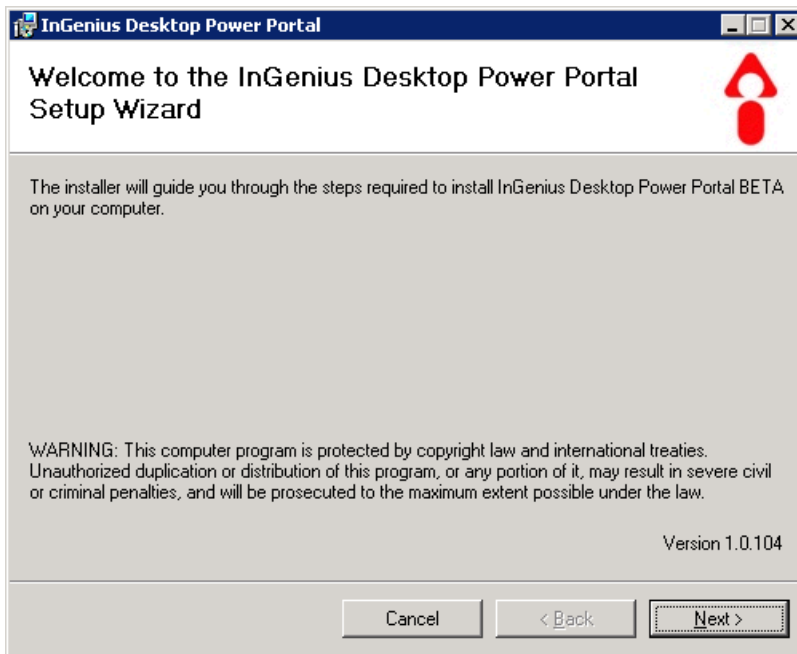
3. **Create a policy and user on the Mitel 3300 ICP for Desktop Power Portal.**

Desktop Power Portal needs to log on to the Mitel 3300 ICP in order to read and write phone key programming. This user needs Read/Write access to Multiline Set Key Assignment, and Read Only access to Class of Service Options Assignment, IP Telephones - All, Network Element Assignment, Remote Directory Number Assignment, and User Configuration. Create a policy with these capabilities in the System Administrator Policies form, and then a user that uses this policy in the User Authorization Profiles form.

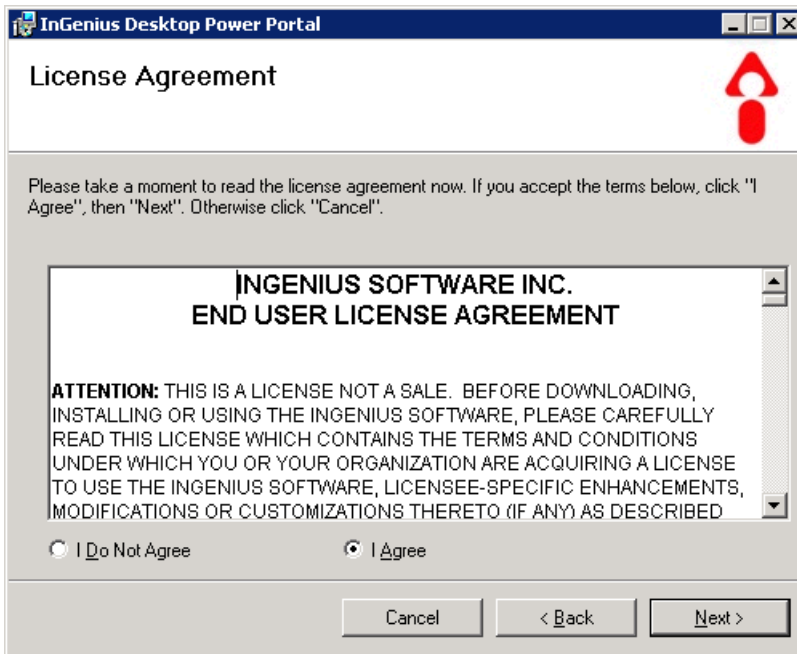
1.4 Desktop Power Portal Installation

Run **Desktop Power PortalSetup.exe** on the machine where you want to install the Desktop Power Portal service.

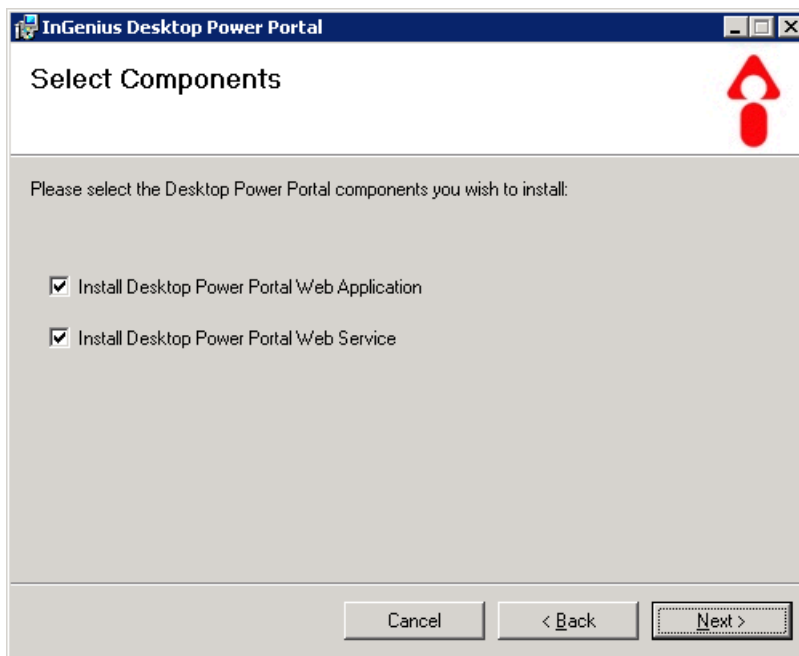
1. Welcome page, click Next:



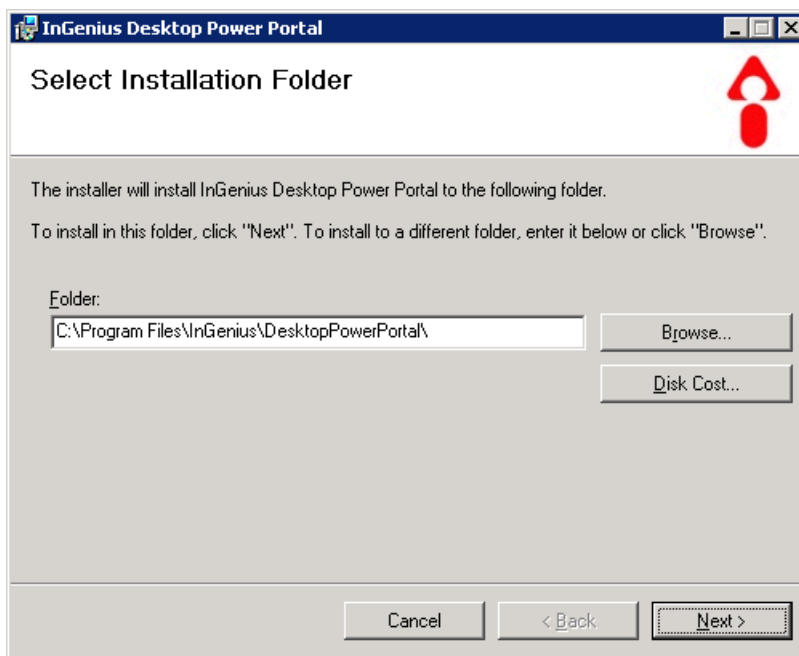
2. License Agreement page, agree to License Agreement and click Next:



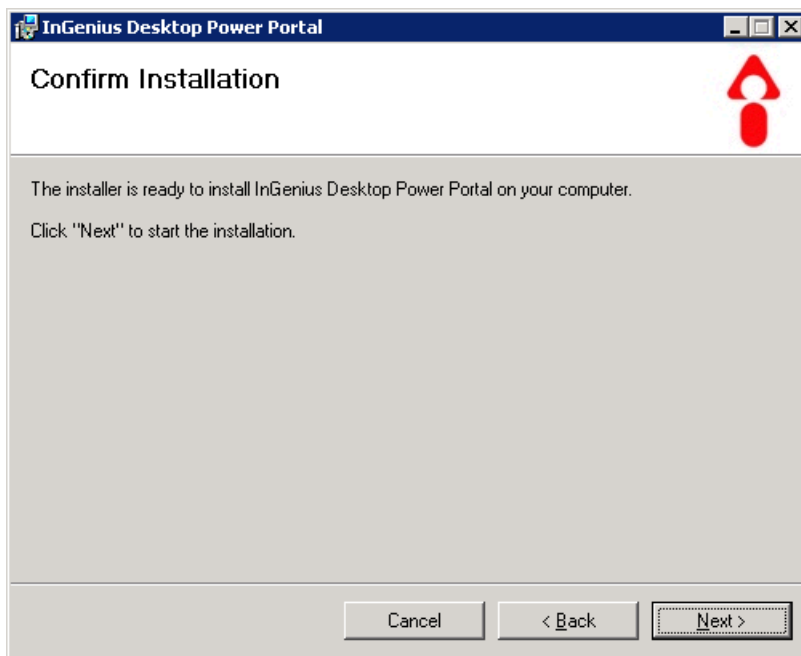
3. Select Components page, specify what you want to install and click Next:



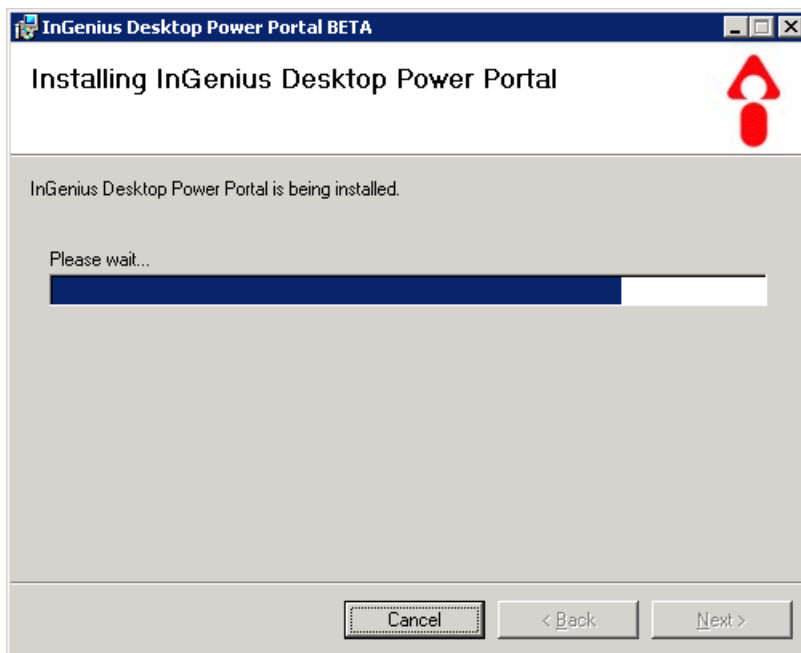
4. Select Installation Folder page, specify where you want to install and click Next:



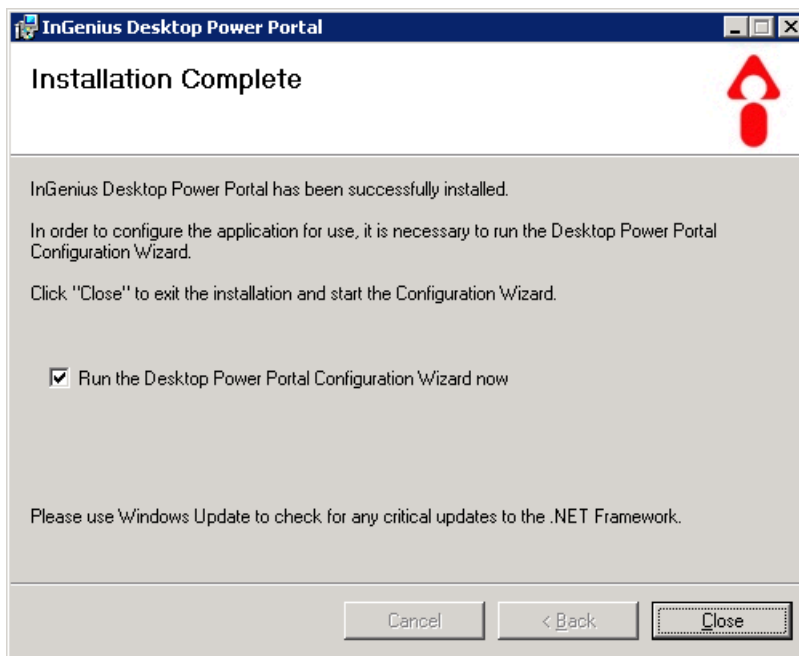
- 5. Confirm Installation page, click Next:



- 6. Installing page:



- 7. Installation Complete page, leave checkbox selected to run Configuration Wizard and click Close:



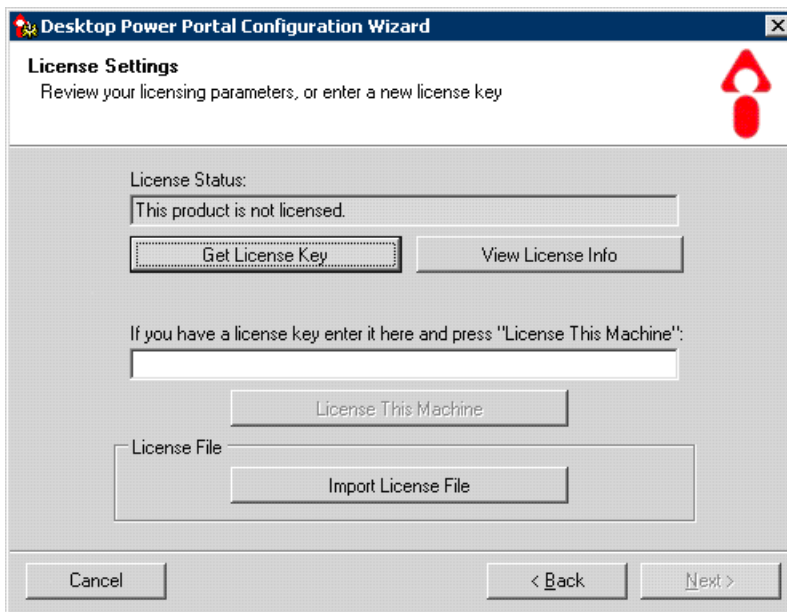
1.5 Desktop Power Portal Configuration

Note: If you choose not to run the Configuration Wizard after the installation, you can open it at a later time from the Start menu. Select Start, All Programs, InGenius Software, Desktop Power Portal, Desktop Power Portal Configuration Wizard.

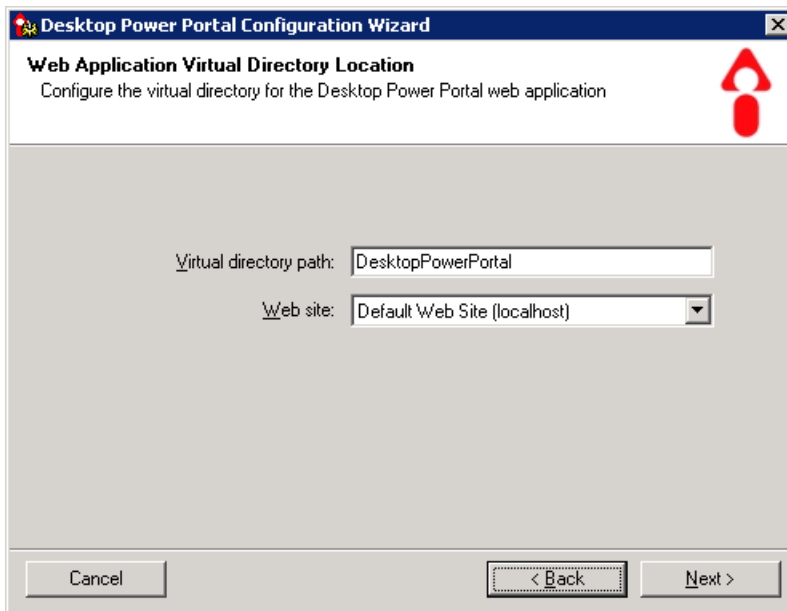
1. Welcome page, click Next:



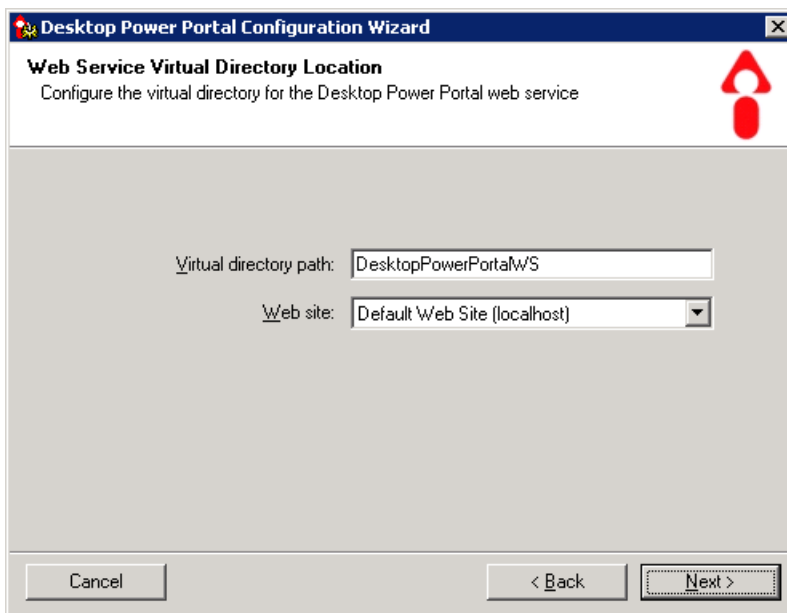
2. Licensing parameters page, enter your license key in the box provided, and click “License This Machine”. Once licensed, click Next.



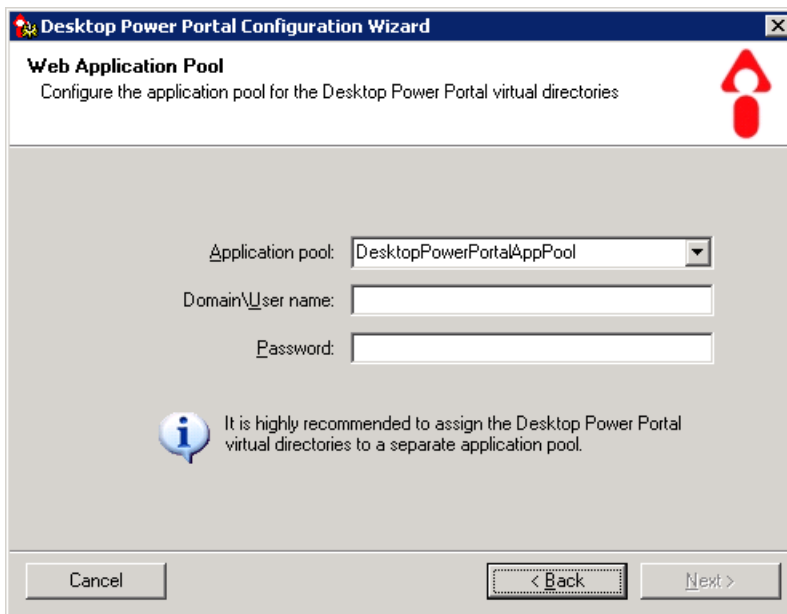
3. Web Application Virtual Directory page, choose virtual directory name(alias for the directory name in IIS) and site and click Next:



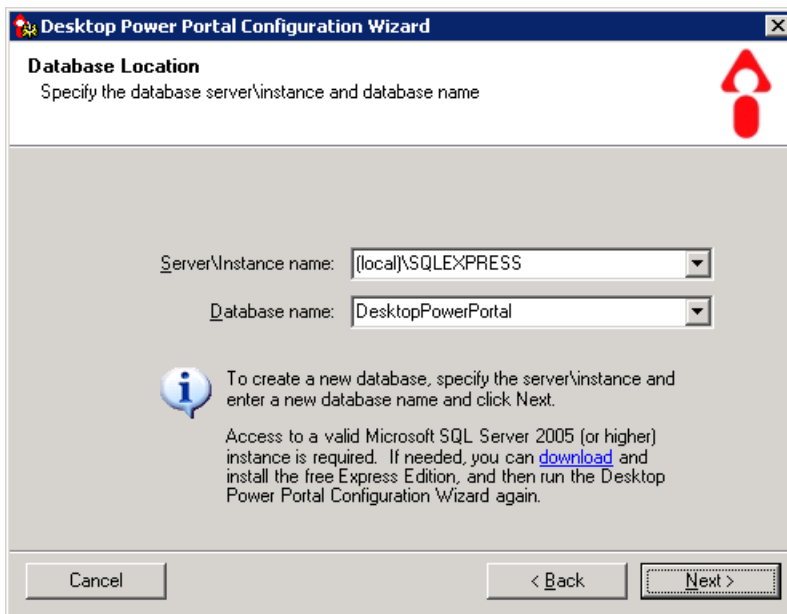
- 4. Web Service Virtual Directory page, choose virtual directory name and site and click Next:



- 5. Application Pool page (Windows 2003 only), select Application pool name , Domain\User name and Password. Enter the credentials for the adbrowser user you set (see [step 2](#) of the initial setup) and click Next:



6. Database Configuration page, choose SQL database server and SQL database name and click Next. If the database doesn't exist you will be prompted to create it:



7. LDAP Settings page, specify the LDAP server or Global Catalog Server. Specify an LDAP server in these ways:
 - a. LDAP://DomainControllerName (Can use host name, FQDN, or IP Address)
 - b. LDAP://ActiveDirectoryDomainName.local

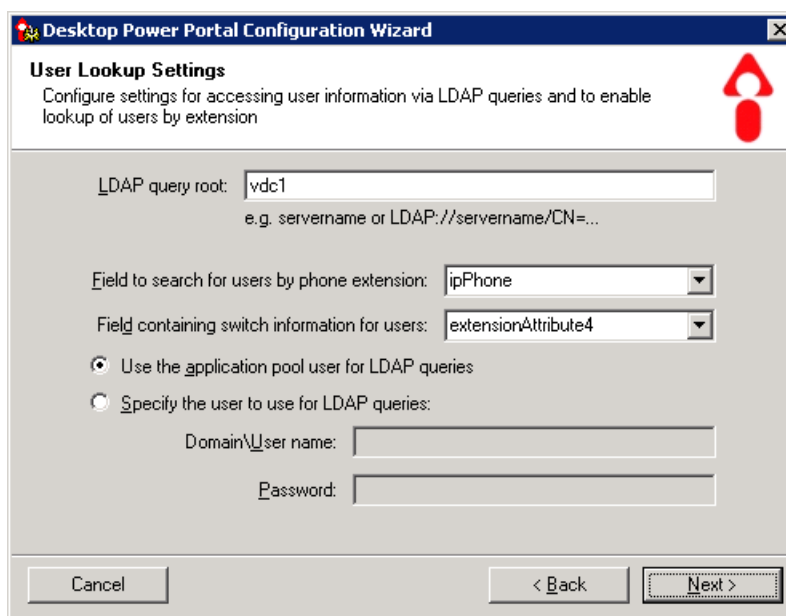
If you are in an Active Directory forest you can locate users and groups forest-wide by using the following ways:

- a. GC://GlobalCatalogServerName (Can use host name, FQDN, or IP Address)
- b. GC://RootForestDomain.local

If you leave the LDAP query root blank, Desktop Power Portal will locate a Global Catalog server from the local Active Directory site.

NOTE: If you use a Global Catalog server all groups added to Desktop Power Portal must be Universal Groups, including nested groups inside the Universal Groups.

Select or type an LDAP fields to lookup extensions and switch names. Provide credentials to use while doing lookups. Click Next:

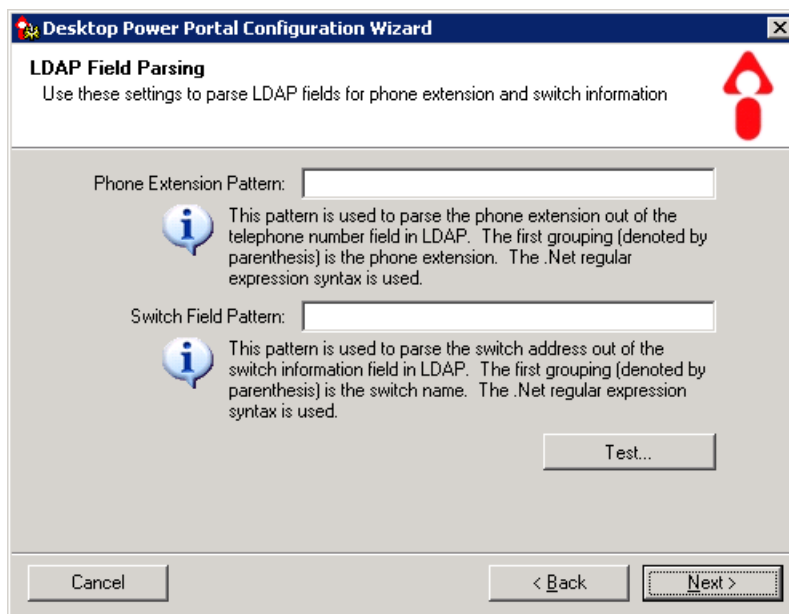


The screenshot shows the 'User Lookup Settings' dialog box within the 'Desktop Power Portal Configuration Wizard'. The dialog has a title bar with a close button (X) and a red arrow icon. The main content area is titled 'User Lookup Settings' and includes the instruction: 'Configure settings for accessing user information via LDAP queries and to enable lookup of users by extension'. The settings are as follows:

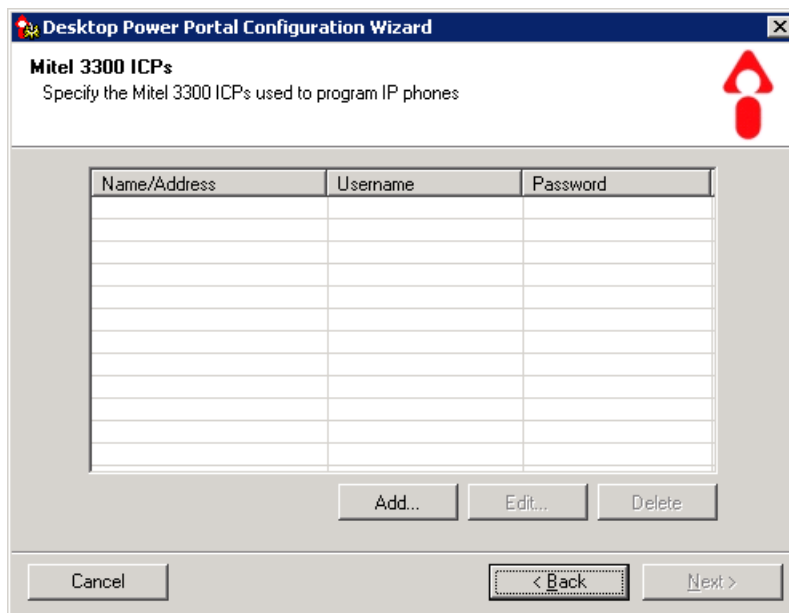
- 'LDAP query root:' text box containing 'vdc1', with a note below: 'e.g. servername or LDAP://servername/CN=...'
- 'Field to search for users by phone extension:' dropdown menu set to 'ipPhone'
- 'Field containing switch information for users:' dropdown menu set to 'extensionAttribute4'
- Radio button selection: 'Use the application pool user for LDAP queries' is selected.
- Radio button selection: 'Specify the user to use for LDAP queries:' is unselected.
- Below the unselected radio button are two text boxes: 'Domain\User name:' and 'Password:'.

At the bottom of the dialog are three buttons: 'Cancel', '< Back', and 'Next >'.

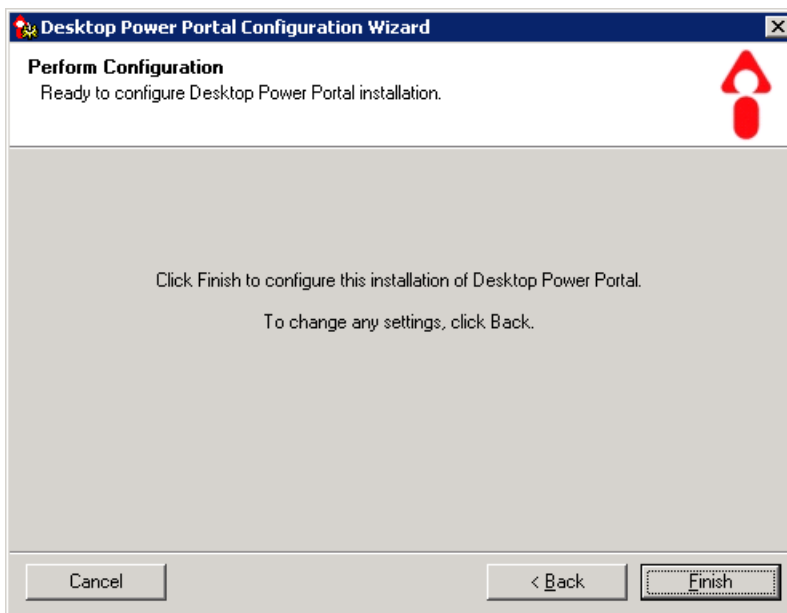
- LDAP Field Parsing page. If the extension or switch are not the entire contents of the specified LDAP field, then you need to enter a regular expression to extract them from the fields. Specify the expressions if necessary and click Next:



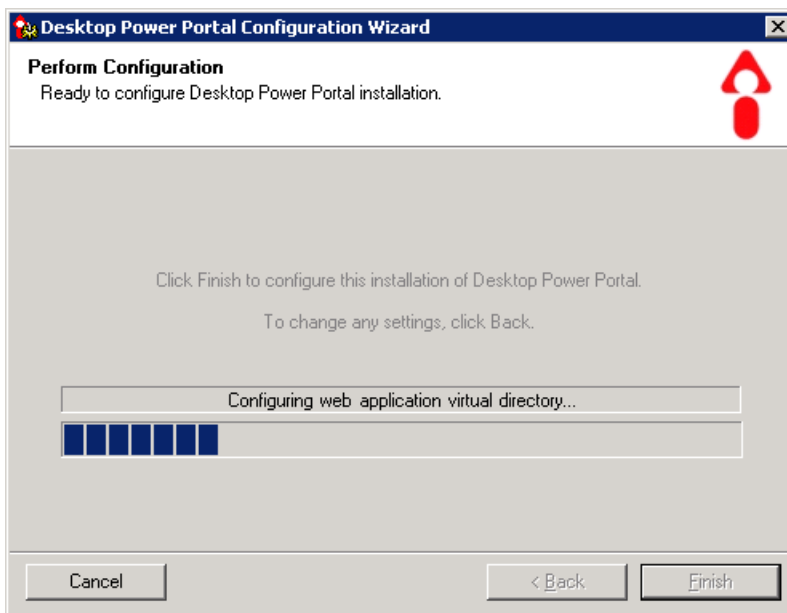
- Mitel 3300 ICPs page. Specify the addresses to the ICPs and the credentials to use (for the user set up in the Prerequisites step) and click Next:



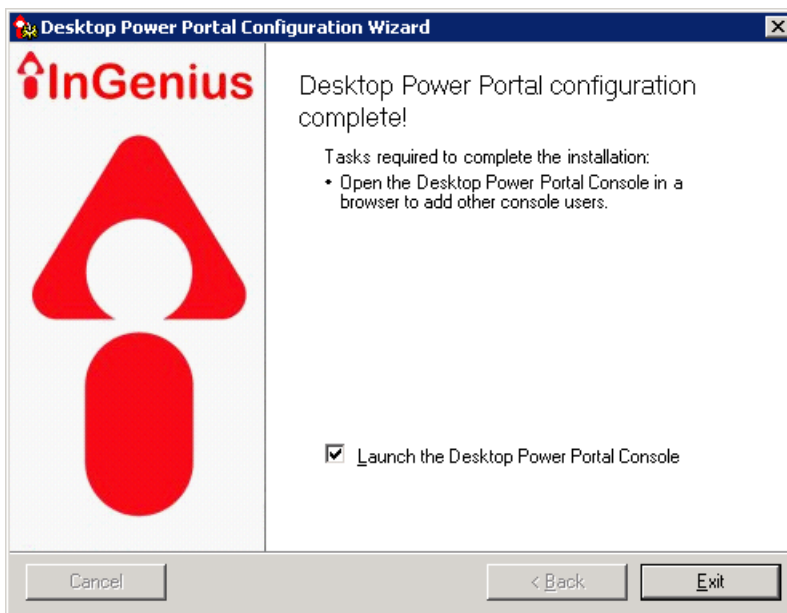
10. Perform Configuration page, click Finish to start the configuration process:



11. Perform Configuration progress:



12. Configuration Complete page, click Exit:



1.6 Testing the Installation

Launch the Desktop Power Portal Console, and log on. Verify that it found your phone extension and that you can program keys on your phone.

2 Appendix – Open Source Software

The following open source software, or portions thereof, have been used in creating the Desktop Power Portal software product.

1. 7-Zip, Copyright 1999-2007 Igor Pavlov, <http://www.7-zip.org/license.txt>
2. Yahoo UI Library, Copyright (c) 2009, Yahoo! Inc. All rights reserved., <http://developer.yahoo.com/yui/license.html>

3 Appendix – For Your Information

3.1 Desktop Power Portal and Microsoft Framework 2.0

In order to install the Desktop Power Portal application, your PC will also need to have the Microsoft .NET Framework 2.0 installed.

- If the Microsoft .NET Framework 2.0 is not installed when you install the Desktop Power Portal application, the install will download and install the Framework at that time.
- The Microsoft .NET Framework 2.0 must also be present if you uninstall the Desktop Power Portal application.